

**Colorbond®**

**Ensure longer lasting looks  
with COLORBOND® steel**



**GUTTERINGS  
MAINTENANCE**

## Guttering Installation Guide

With looks that are proven to last and a range of 20 pre-painted contemporary colours, guttering made from COLORBOND® steel is the right choice for your home. And with a warranty that's

backed by BlueScope Steel, it's no surprise more Australians choose guttering and downpipes made from COLORBOND® steel to enhance their most valuable asset – their home.

### Your installation checklist

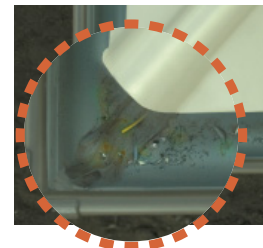
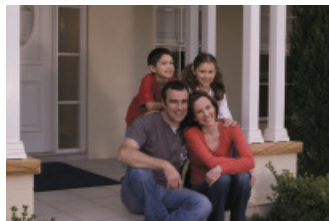
Good care of your guttering starts before installation. We recommend that you discuss the following points with your builder prior to installation. Additionally, to confirm the authenticity of your purchase, ask your installer to show you the COLORBOND® steel brand mark printed on the inside of your guttering.

Avoid	Potential problems <sup>†</sup>	Recommended	BlueScope Steel Technical Bulletin**
<b>Before installation</b>			
Avoid leaving bundles of guttering outside, unprotected on the ground.	Moisture trapped between sheets of steel can cause staining or rust.	Stack guttering above ground and cover with heavy-duty sheeting.	Care and Storage of BlueScope Exterior Products Prior to Installation TB-7.
Avoid cleaning brickwork with acid near gutters.	Acid can cause rust at bends and surface staining.	Clean brickwork prior to installing gutters or mask nearby metal.	Acid Cleaning Brickwork CTB-15.
Avoid guttering designs with low sections where pools of water may collect.	Pooling can cause rust and surface staining.	Design guttering appropriately so that water properly flows through, rather than forming pools.	Recommended Steel Gutter Systems TB-15.
<b>During installation</b>			
Avoid leaving metal debris in gutters (metal filings, off-cuts, loose screws etc).	Metal debris can cause surface rust and staining. Hot debris can stick to the guttering surface.	Do cutting off-site or at ground level. Mask around holes to be drilled. Thoroughly clean away debris.	Swarf Staining of Steel Roofing and Walling Profiles TB-5.
Avoid using incorrect sealants on joints.	Incorrect sealants can cause rust at joints, broken seals or require extra primer.	Use only neutral cure silicone sealants correctly applied.	Sealants for Exterior Finishes TB-9.
Avoid using incorrect fasteners, screws and accessories.	Incorrect fasteners, screws and accessories can cause rust and staining.	Use only recommended fasteners, screws, washers and metals.	Fasteners for Roofing and Walling Product – Selection Guide TB-16. Dissimilar Metals – CTB-12.
Avoid leaving CORSTRIP® protective film in place after installation or cutting it with a knife.	Leaving CORSTRIP® protective film in place after installation can make it difficult to remove and cutting it with a knife can damage the COLORBOND® steel surface.	Peel off the CORSTRIP® protective film by hand immediately following installation.	
<b>After installation</b>			
Avoid damage from follow-on tradesmen and other work.	Post installation damage can cause surface rust, staining and structural damage.	Tradesmen should take care, use correct fasteners and sealants, and clean away metal debris.	Following Trades CTB-17.

\*\*For copies of BlueScope Steel Technical Bulletins visit [colorbond.com](http://colorbond.com) or call 1800 022 999.

<sup>†</sup>Carefully read the BlueScope Steel warranty that applies to your purchase for applicable exclusions and limitations.

## Guttering Maintenance Guide



### Safety first

Any work you do around your home with a ladder, especially on guttering, requires care. Basic precautions will make your maintenance safe and easy.

- Be aware of hazards around your home, such as power lines, and take necessary precautions.
- Use a sturdy ladder or a platform placed on flat stable ground, rather than standing on the roof. Likewise, it is safer to get down and move the ladder across instead of leaning over beyond the footprint of the ladder.
- Guttering can contain all types of debris so wear thick protective gloves.
- A non-slip mat over the guttering will stop your ladder from scratching it.

### Inspect regularly

Inspecting and maintaining your guttering should be done at least every six months – the end of autumn and spring are usually good times. In some locations, more frequent maintenance may be required due to local factors such as overhanging trees.



After installation, regularly check for the build-up of debris. If cleaning is needed, say after four months, then that would be your regular maintenance period. Talk to your local handyman if you are unable to check or clean the guttering yourself.

### What to look for

During your first inspection, look for any loose steel debris that may have been left behind after installation. Subsequent inspections should:

- Look for any build-up of dirt and salt deposits on the fascia and the underside of guttering. Also look for deposits around joins, brackets, rivets and screws.
- Look for a build-up of debris inside the guttering (especially the high end), such as leaf matter, dirt and possibly fungus.

### Maintenance procedure

- Use a stiff, soft bristled brush to sweep debris into a pile (do not use hand shovels or other hard tools). Be careful not to scratch or damage the guttering.
- Place debris into a bucket or similar and lower to the ground.
- Wash down exposed fascia and the inside of the gutter with a hose including overhangs, rain heads, water spouts and overflow locations.
- To remove significant fungal growth, see BlueScope Steel Technical Bulletin\*\* Identification of Fungus in the Field and Recommendations for its Removal TB-27.
- To remove stubborn stains and dirt, see BlueScope Steel Technical Bulletin\*\* Maintenance of COLORBOND® steel Roofing TB-4. If you use detergent, disconnect any water tanks connected to the gutter.
- Maintenance must be undertaken in accordance with local government water restriction guidelines.

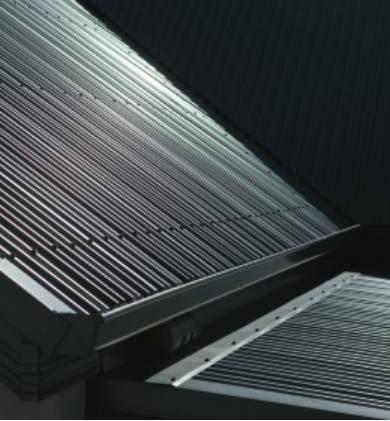
### Cleaning downpipes

- Clean the inside of downpipes by using a pressure water hose down each of the downpipes.
- The hose should then be fed into the pipe from the inlet down to the outlet, to ensure there are no obstructions.
- Remove any blockages immediately to avoid water backing up in the gutters.

Colorbond®



BLUESCOPE  
STEEL



**For technical support and information call 1800 022 999 or visit [colorbond.com](http://colorbond.com)**



9 320075 058272

COLORBOND® and BLUESCOPE® are registered trade marks of BlueScope Steel Limited. © 2008 by BlueScope Steel Limited ABN 16 000 011 058. All rights reserved. No part of this brochure may be reproduced, stored in a retrieval system, or transmitted in any form by any means, electronic, mechanical, photocopying, recording or otherwise, without the written permission of BlueScope Steel Limited. \*Warranty available on application. The duration and terms and conditions of available warranties vary according to product use, location and application. To determine the eligibility of your home see [colorbond.com/warranties](http://colorbond.com/warranties) or call 1800 022 999.